

# FIRSTmix 100

GYROSCOPIC MIXER



## The cost effective automatic gyroscopic mixer



By providing reliable and consistent mixing results at a low lifetime cost, the FIRSTmix 100 automatic gyroscopic mixer is an ideal solution for small businesses seeking to optimize their mixing processes while minimizing expenses.

The COROB FIRSTmix 100 automatic gyroscopic mixer is the ideal equipment for paint stores seeking a reliable, high-performing solution with low lifetime costs.

The unit can handle round and square cans of various sizes, weighing up to 35 kg, which makes it a great option for a wide range of applications and for growing businesses and markets.

With its high-quality components and durable frame, the COROB FIRSTmix 100 is built to last and provide worry-free performance for years to come, minimizing the need for maintenance.

The automatic clamping system not only enhances operator safety but also makes operations effortless.

Automatic pressure clamping settings, which are based on can size, ensure that cans are secured in place for optimal mixing.

The extractable lower tray facilitates the loading of cans and can be readily integrated with a conveyor, further enhancing the ease of use and efficiency of the mixer.



### AFFORDABLE EFFICIENCY

A high-performance automatic mixer that improves your output on a budget



### PROVEN DURABILITY

The robust design and reliable technology provide years of worry-free service



### EFFORTLESS OPERATION

Automatic clamping and ergonomic design make can handling safe and easy

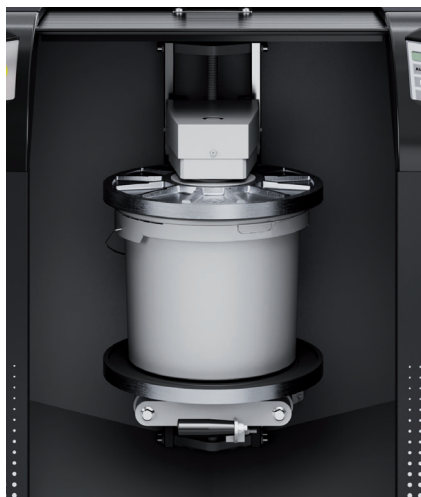
#### ABOUT US

COROB is a global leader with a long and successful history in developing, manufacturing and delivering high-tech dispensing and mixing solutions for the widest range of tinting applications. Our offering is supported by a global service network making COROB a total solution provider.

**corob**

# FIRSTmix 100

GYROSCOPIC MIXER



## Technical data

Business environment	Small paint stores / Growing markets and paint stores
Volume output	Low / Medium
Type	Automatic gyrosopic mixer
Max can weight [kg] (lbs)	35 [77]
Can size [mm] (in)	Height: min 100 (4), max 400 (15.8) Diameter: max 340 (13.4)
Can type	Round, square
Mixing motor power [hp] (kW)	0.75 (0.55)
Certification	CE/UKCA
Door type	Sliding Shutter
Dimensions (WxDxH) [mm] (in)	780 x 820 x 1085 (30.7 x 34.2 x 42.7)
Footprint [sqm] (sq ft)	0.64 (6.89)

### A WORD ON GYROSCOPIC MIXING



Gyrosopic mixing takes place by means of the simultaneous rotation of the mechanism along two axes aligned perpendicularly to each other. The resulting motion enables the perfect product transfer inside the can and the homogeneous mix of the colorant with the various base types.

The solution is suitable for difficult base products in terms of viscosity: from latexes to heavy silicates. The best for medium to bigger sized cans and for cans of different shapes (round, oval and square).

© COPYRIGHT 2023, COROB S.p.A. - All rights reserved in all countries. The contents and information contained in this brochure are provided without warranty, representation, inducement or license of any kind. COROB reserves the right to modify its products at any time without further obligation. [v04 - 05/2023 - EN]

[corob.com](https://www.corob.com)

**corob**